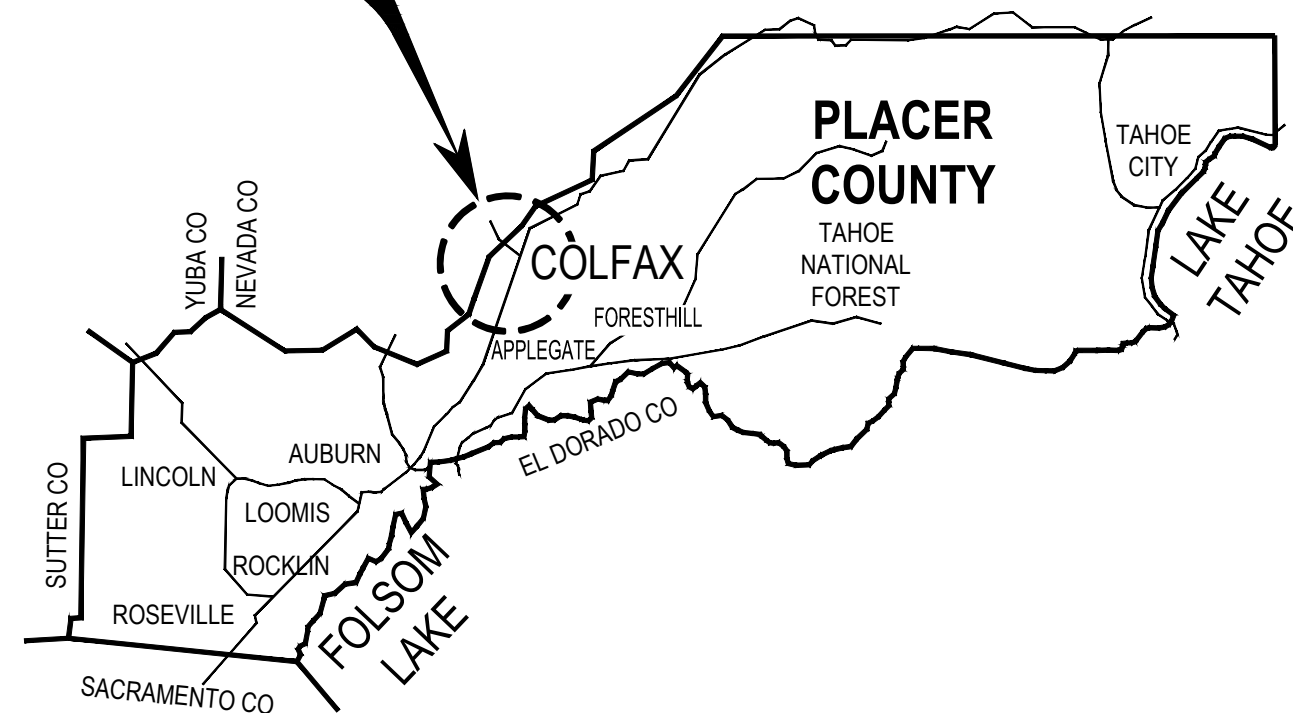


PROJECT PLANS FOR CITY OF COLFAX KNEELAND STREET PAVEMENT REHABILITATION PROJECT

MAY 2020

CITY OF COLFAX
PLACER COUNTY, CALIFORNIA
FOR USE IN CONJUNCTION WITH
CALTRANS STANDARD SPECIFICATIONS, DATED 2018
CALTRANS STANDARD PLANS, DATED 2018

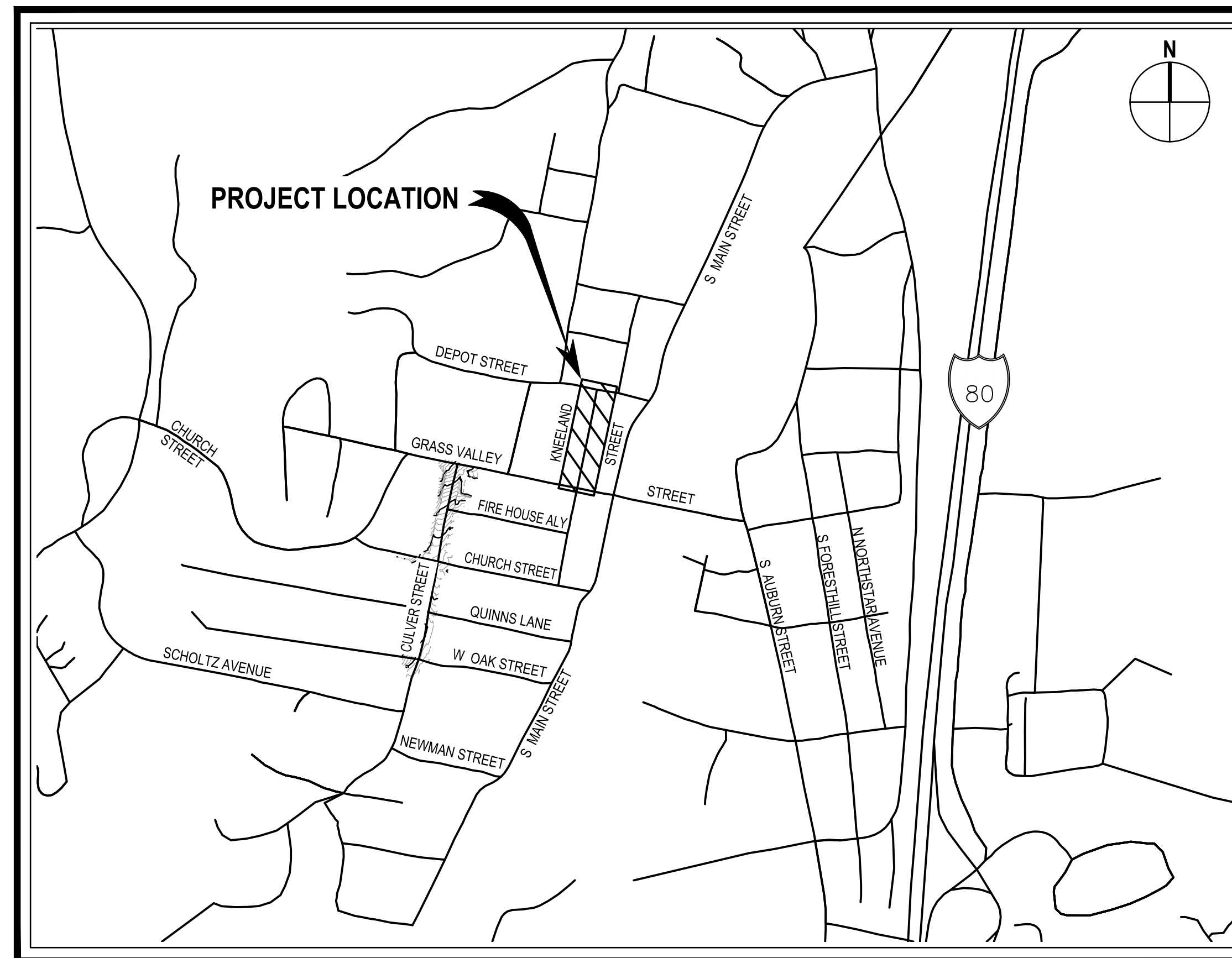
PROJECT LOCATION



VICINITY MAP
NOT TO SCALE

GEOTECHNICAL ENGINEER:

SOIL SEARCH ENGINEERING
4088 BRIDGE STREET #9
FAIR OAKS, CA 95628
916-761-7116



LOCATION MAP
NOT TO SCALE

INDEX OF SHEETS

SHEET NO.	DRAWING NO.	DRAWING TITLE
1	T1	TITLE SHEET
2	G1	NOTES, LEGEND, AND ABBREVIATIONS
3	X1	SECTIONS AND DETAILS
4	P1	PLAN AND PROFILE

CITY OF COLFAX

APPROVED BY _____ DATE 05/27/2020

Larry M. Wing

LARRY M. WING
City Engineer
RCE 29836

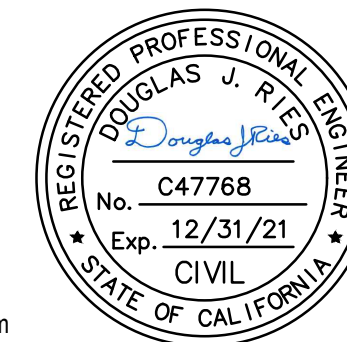
No.	Issue	Drawn	Approved	Date

Bar is one inch on original size sheet
0 1"

Reuse of Documents
This document and the ideas and designs incorporated herein, as an instrument of professional service, is the property of GHD and shall not be reused in whole or in part for any other project without GHD's written authorization.
© 2020 GHD



GHD Inc.
943 Reserve Drive, Suite 100
Roseville California 95678 USA
T 1 916 782 8688 W www.ghd.com



Drawn	EM
Drafting Check	DJR
Project Manager	DJR

Designer	DTZ
Design Check	DJR
Date	MAY 2020
Scale	AS SHOWN

Client	CITY OF COLFAX
Project	KNEELAND STREET - PAVEMENT REHABILITATION PROJECT
Title	TITLE SHEET
Project No.	11201706
Original Size	ANSI D
Sheet No.	T1

GENERAL NOTES:

- EXCAVATIONS OVER FIVE FEET (5') DEEP REQUIRE AN EXCAVATION PERMIT FROM THE STATE DEPARTMENT OF INDUSTRIAL SAFETY.
- CONTRACTOR SHALL CALL "UNDERGROUND SERVICE ALERT" AT (800) 642-2444 AT LEAST 48 HOURS PRIOR TO START OF CONSTRUCTION FOR LOCATING UNDERGROUND UTILITIES.
- CONSTRUCTION CONTRACTOR AGREES THAT IN ACCORDANCE WITH GENERALLY ACCEPTED CONSTRUCTION PRACTICES, CONSTRUCTION CONTRACTOR WILL BE REQUIRED TO ASSUME SOLE AND COMPLETE RESPONSIBILITY FOR JOB SITE CONDITIONS DURING THE COURSE OF CONSTRUCTION OF THE PROJECT, INCLUDING SAFETY OF ALL PERSONS AND PROPERTY; THAT THIS REQUIREMENT SHALL BE MADE TO APPLY CONTINUOUSLY AND NOT BE LIMITED TO NORMAL WORKING HOURS, AND CONSTRUCTION CONTRACTOR FURTHER AGREES TO DEFEND, INDEMNIFY AND HOLD DESIGN PROFESSIONAL HARMLESS FROM ANY AND ALL LIABILITY, REAL OR ALLEGED, IN CONNECTION WITH THE PERFORMANCE OF WORK ON THIS PROJECT, EXCEPTING LIABILITY ARISING FROM THE SOLE NEGLIGENCE OF THE DESIGN PROFESSIONAL.
- UNAUTHORIZED CHANGES & USES: THE ENGINEER PREPARING THESE PLANS WILL NOT BE RESPONSIBLE FOR, OR LIABLE FOR, UNAUTHORIZED CHANGES TO OR USES OF THESE PLANS. ALL CHANGES TO THE PLANS MUST BE IN WRITING AND MUST BE APPROVED BY THE PREPARER OF THESE PLANS.
- NOTICE TO CONTRACTORS: THE EXISTENCE AND LOCATION OF ANY UNDERGROUND UTILITY LINES OR STRUCTURES SHOWN ON THESE PLANS WERE OBTAINED BY A SEARCH OF AVAILABLE RECORDS. THE CONTRACTOR IS REQUIRED TO TAKE DUE PRECAUTIONARY MEASURES TO PROTECT THE UTILITY LINES SHOWN AND ANY OTHER LINES NOT OF RECORD OR NOT SHOWN ON THESE PLANS.
- THE CONTRACTOR SHALL BE RESPONSIBLE FOR ANY DAMAGES TO CITY OWNED OR OTHER UTILITIES CAUSED BY HIS OPERATIONS.
- THE CONTRACTOR SHALL BE RESPONSIBLE FOR OFF-SITE DISPOSAL OF ALL BITUMINOUS PAVEMENT, CONCRETE AND REINFORCEMENT, AND SPOILS NOT NEEDED FOR BACKFILL AS REQUIRED BY THE ENGINEER AND PER THE SPECIFICATIONS.
- ALL CONSTRUCTION MATERIALS AND METHODS SHALL CONFORM TO THE REQUIREMENTS OF THE CURRENT COUNTY OF PLACER GENERAL SPECIFICATIONS. ALL REFERENCES TO STATE OF CALIFORNIA, DEPARTMENT OF TRANSPORTATION STANDARD SPECIFICATIONS SHALL REFER TO CURRENT EDITION OF THE STANDARD SPECIFICATIONS. ATTENTION IS ALSO DIRECTED TO THE STANDARD PLATES CONTAINED IN THE PLACER COUNTY LAND DEVELOPMENT MANUAL AND THE CURRENT EDITION OF THE CALTRANS STANDARD PLANS, WHICH, WHEN APPLICABLE, ARE INCLUDED IN THESE DRAWINGS AND/OR REFERENCED BY PLATE OR STANDARD PLAN NUMBER. CONTRACTOR IS RESPONSIBLE TO HAVE AVAILABLE A CURRENT SET OF PLACER COUNTY GENERAL SPECIFICATIONS WITH PLATES, CALTRANS STANDARD SPECIFICATIONS, AND CALTRANS STANDARD PLANS.
- PUBLIC SAFETY AND TRAFFIC CONTROL SHALL BE PROVIDED IN ACCORDANCE WITH COUNTY REQUIREMENTS AND AS DIRECTED BY THE ENGINEER. SAFE VEHICULAR AND PEDESTRIAN ACCESS SHALL BE PROVIDED AT ALL TIMES DURING CONSTRUCTION.
- CONTRACTOR MUST IMMEDIATELY REINSTALL ANY TRAFFIC SIGNS REMOVED IN THE COURSE OF CONSTRUCTION. ANY SIGNS LOST OR DAMAGED BY THE CONTRACTOR SHALL BE REPLACED OR REPAIRED BY THE CONTRACTOR AS DIRECTED BY THE ENGINEER.
- THE CITY MAY REQUIRE THE CONTRACTOR TO UNCOVER ANY IMPROVEMENTS THAT HAVE BEEN COMPLETED WITHOUT PROPER CITY INSPECTION AND/OR APPROVAL. IF THE INSTALLATION IS FOUND NOT TO MEET CITY STANDARDS OR PREVIOUSLY APPROVED ALTERNATIVES SHOWN ON THE PLANS, THE CONTRACTOR MAY BE REQUIRED TO REMOVE AND REPLACE SUCH IMPROVEMENTS AT CONTRACTOR EXPENSE.
- PRIOR TO ANY ACTIVITY WITHIN THE CITY RIGHT-OF-WAY, THE CONTRACTOR SHALL INSTALL C19(CA) OR C23(CA) SIGNS IN ACCORDANCE WITH CHAPTER 6 OF THE CURRENT CAMUTCD MANUAL. THE SIGNS SHALL BE PROFESSIONALLY MADE, METAL, REFLECTORIZED, AND PLACED ON WOODEN POSTS FOR THE DURATION OF THE PROJECT. THE MINIMUM SIZE SHALL BE 36". THE SIGNS SHALL BE REPLACED OR REPAIRED IF STOLEN OR DAMAGED. THE PLACEMENT, TYPE, AND LOCATION OF ALL TRAFFIC CONTROL DEVICES SHALL BE REVIEWED AND APPROVED BY THE ENGINEER. THE ENGINEER OR INSPECTOR SHALL DIRECT THE INSTALLATION OR CHANGES TO SIGNS, STRIPING, CONES, BARRICADES, ETC. DURING THE COURSE OF CONSTRUCTION FOR TRAFFIC SAFETY.
- IF ANY ARCHEOLOGICAL ARTIFACTS, EXOTIC ROCK (NON-NATIVE), OR UNUSUAL AMOUNTS OF SHELL OR BONE ARE UNCOVERED DURING ANY ON-SITE CONSTRUCTION ACTIVITIES, ALL WORK MUST STOP IMMEDIATELY IN THE AREA AND A SOPA-CERTIFIED (SOCIETY OF PROFESSIONAL ARCHAEOLOGISTS) ARCHAEOLOGIST RETAINED TO EVALUATE THE DEPOSIT. THE CITY PLANNING DEPT. AND THE COUNTY DEPT. OF MUSEUMS MUST ALSO BE CONTACTED FOR REVIEW OF THE ARCHAEOLOGICAL FIND(S). IF THE DISCOVERY CONSISTS OF HUMAN REMAINS, THE PLACER COUNTY CORONER AND NATIVE AMERICAN HERITAGE COMMISSION MUST ALSO BE CONTACTED. WORK IN THE AREA MAY ONLY PROCEED AFTER AUTHORIZATION IS GRANTED BY THE CITY OF COLFAX PLANNING DEPARTMENT. FOLLOWING A REVIEW OF THE NEW FIND AND CONSULTATION WITH APPROPRIATE EXPERTS, IF NECESSARY, THE AUTHORITY TO PROCEED MAY BE ACCOMPANIED BY THE ADDITION OF DEVELOPMENT REQUIREMENTS WHICH PROVIDE PROTECTION OF THE SITE AND/OR ADDITIONAL MITIGATION MEASURES NECESSARY TO ADDRESS THE UNIQUE OR SENSITIVE NATURE OF THE SITE.
- PRIOR TO THE START OF CONSTRUCTION THE CONTRACTOR SHALL PROVIDE THE CITY OF COLFAX A TRAFFIC PLAN IN ACCORDANCE WITH THE COUNTY SPECIFICATIONS.
- TEMPORARY TRAFFIC STRIPING MUST BE PROVIDED BY THE CONTRACTOR IF EXISTING DELINEATION IS DESTROYED DURING CONSTRUCTION. PAINTED MARKING OR STRIPING TAPE MAY BE USED. THE TEMPORARY STRIPING MUST BE APPROVED FOR MATERIAL AND LAYOUT BY THE ENGINEER. ALL TEMPORARY PAINTED MARKINGS THAT ARE TO BE REMOVED SHALL BE SANDBLASTED BY THE CONTRACTOR AT THE EXPENSE OF THE CONTRACTOR.
- ONLY THE APPROXIMATE LOCATION OF THE EXISTING STORM DRAINS AND WATER FACILITIES HAVE BEEN SHOWN. THE CONTRACTOR SHALL VERIFY EXACT LOCATION BY POTHOLING IN THE FIELD.
- IF AT ANY TIME DURING THE COURSE OF CONSTRUCTING THE PROPOSED PROJECT EVIDENCE OF SOIL AND/OR GROUNDWATER CONTAMINATION WITH HAZARDOUS MATERIAL IS ENCOUNTERED, THE APPLICANT SHALL IMMEDIATELY STOP THE PROJECT AND CONTACT ENVIRONMENTAL HEALTH SERVICES HAZARDOUS MATERIAL SECTION. THE PROJECT SHALL REMAIN SUSPENDED UNTIL THERE IS A RESOLUTION OF THE CONTAMINATION PROBLEM TO THE SATISFACTION OF ENVIRONMENTAL HEALTH SERVICES AND TO THE REGIONAL WATER QUALITY CONTROL BOARD.

- SCARIFY 6" OF SUBGRADE SHALL BE PAID FOR AS OBLITERATE SURFACING.
- WATER LINE PROTECTIVE CAP SHALL BE PAID FOR A MINOR CONCRETE (BACKFILL).

PAVING NOTES:

- ALL EXISTING AC SURFACES SHALL BE SAWCUT ONE FOOT MINIMUM INSIDE THE EDGE OF PAVEMENT OR AS SHOWING ON THE PLANS TO A NEAT, STRAIGHT LINE AND REMOVED. THE EXPOSED EDGE SHALL BE SEALED WITH EMULSION PRIOR TO PAVING. THE EXPOSED BASE MATERIAL SHALL BE GRADED, RECOMPACTED, AND RESEALED PRIOR TO PAVING.
- ASPHALT CONCRETE SHALL BE TYPE A, 1/2" MAXIMUM MEDIUM GRADING AND SHALL CONFORM TO THE SPECIAL PROVISIONS FOR HMA (TYPE A).
- AGGREGATE BASE SHALL BE CLASS 2, 3/4" MAXIMUM GRADING. AGGREGATE BASE SHALL CONFORM TO THE SPECIAL PROVISIONS.

FUGITIVE DUST CONTROL:

- THE CONTRACTOR IS TO MAINTAIN ADEQUATE DUST CONTROL PER SECTION 10, CALTRANS SPECIFICATIONS, AND UTILIZE DUST CONTROL MITIGATION APPROVED BY THE AIR POLLUTION CONTROL DISTRICT (A.P.C.D.). PARTICULATE CONTROL MEASURES SHALL ALSO BE USED THROUGHOUT THE CONSTRUCTION PHASE OF THIS PROJECT.
- THE CONTRACTOR SHALL FOLLOW THE GUIDELINES OUTLINED IN THE "FUGITIVE DUST CONTROL" HANDBOOK AVAILABLE FROM A.P.C.D.
- THE CONTRACTOR SHALL APPLY WATER TO ALL DISTURBED AREAS FOR THE ALLEVIATION OR PREVENTION OF DUST NUISANCE.
- DUST PRODUCING CONSTRUCTION ACTIVITIES SHALL BE SUSPENDED DURING PERIODS OF HIGH WINDS (GUSTS EXCEEDING 25 MPH).
- CONSTRUCTION VEHICLES AND EQUIPMENT SHALL BE RESTRICTED TO TRAVEL ALONG WELL WATERED CONSTRUCTION ROUTES AND SHALL BE LIMITED TO A MAXIMUM SPEED OF 15 MPH ON NON-PAVED CONSTRUCTION SITES.
- THE CONTRACTOR SHALL USE TARPULINS OR OTHER EFFECTIVE COVERS FOR HAUL TRUCKS WHICH TRAVELS IN PUBLIC STREETS.
- EXISTING STREETS AND PAVED ROADS SHALL BE REGULARLY SWEEP AS FAR AS NECESSARY TO ENSURE THAT NOT SILT, DEBRIS OR POLLUTANT ARE CARRIED OVER TO ADJACENT PUBLIC THOROUGHFARES. DO NOT WASH DOWN STREETS WITH WATER UNTIL DIRT AND DUST HAS BEEN REMOVED BY DRY SWEEPING. THIS IS TO PREVENT CONTAMINATION OF WATERWAY WITH SEDIMENT.
- ALL CONSTRUCTION EQUIPMENT SHALL BE CLEANED REGULARLY AND KEPT PROPERLY TUNED TO MINIMIZE THE AMOUNT OF DUST AND POLLUTANTS EMITTED INTO THE AIR.

WATER NOTES:

- THE CONTRACTOR SHALL PROVIDE TWO WORKING DAYS NOTICE TO PLACER COUNTY WATER AGENCY INSPECTION HOTLINE AT (530) 823-4885 PRIOR TO BEGINNING ANY WORK OVER WATER MAIN FACILITIES.

ABBREVIATIONS

AC	ASPHALT CONCRETE	GR	GRATE	SDMH	STORM DRAIN MANHOLE
AVRV	AIR RELEASE VALVE	GV	GATE VALVE	SDN	STORM DRAIN NUMBER
BC	BEGIN CURVE	INV	INVERT	SL	SANITARY SEWER SERVICE LATERAL
B/C	BACK OF CURB	JP	JOINT POLE	SS	SANITARY SEWER
BO	BLOW-OFF VALVE	JT	JOINT UTILITY TRENCH	SSN	SANITARY SEWER NUMBER
B/W	BACK OF WALK	L	LEFT, LENGHT	SSMH	SANITARY SEWER MANHOLE
BVC	BEGIN VERTICAL CURVE	LF	LINEAL FEET	STA	STATION
CL	CENTERLINE	MAX	MAXIMUM	STD	STANDARD
CO	CLEANOUT	MH	MANHOLE	TBC	TOP BACK OF CURB
DI	DROP INLET	MIN	MINIMUM	TFC	TOP FACE OF CURB
DWY	DRIVEWAY	OFF	OFFSET	TYP	TYPICAL
EC	END CURVE	OG	ORIGINAL GROUND	W	WATER, WATER MAIN
EL	ELEVATION	OH	OVERHEAD UTILITY	WM	WATER METER
EP	EDGE OF PAVEMENT	PCC	POINT OF COMPOUND CURVE	WS	WATER SERVICE LATERAL
EXIST,EX	EXISTING	PCWA	PLACER COUNTY WATER AGENCY	WV	WATER VALVE
EXSSN	EXISTING SANITARY SEWER NUMBER	PL	PROPERTY LINE		
F/C	FACE OF CURB	PRC	POINT OF REVERSE CURVE		
FL, f _L	FLOWLINE	R	RADIUS, RIGHT		
FG	FINISHED GRADE	RL	LENGTH OF PIPE RESTRAINT		
FH	FIRE HYDRANT	S	SLOPE		
G	GAS, GAS MAIN	SD	STORM DRAIN		
GB	GRADE BREAK	SDDI	STORM DRAIN DROP INLET		

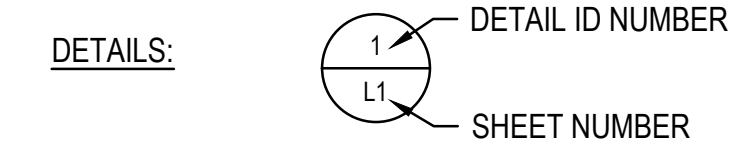
LEGEND

PROPOSED	EXISTING	
— — — — —	— — — — —	EDGE OF PAVEMENT
- - - - -	- - - - -	SIDEWALK
— X — X —		FENCE
— OH —		OVERHEAD UTILITY
— W —		WATER MAIN PIPE
— S — S —		SEWER LINE
— JT — JT —		JOINT TRENCH
	▨	DROP INLET
	▣	IRRIGATION CONTROL VALVE
	⊖	FIRE HYDRANT
	⊕	JOINT POLE
	⊙	HOSE BIB
	⊛	LIGHT
	⊙	LIGHT
	⊙	SIGN
	⊙	TREE
	⊙	UTILITY POLE
	⊙	WATER METER
	⊙	WATER VALVE, UNLESS NOTED OTHERWISE
	▨	STORM DRAIN DRAINAGE INLET
	▨	STORM DRAIN LINE
	▨	PAVEMENT STRUCTURAL SECTION

CONSTRUCTION NOTE DESIGNATIONS

- (R1) ROADWAY AND RELATED ITEMS CONSTRUCTION NOTES
- (D1) DRAINAGE AND RELATED ITEMS CONSTRUCTION NOTES

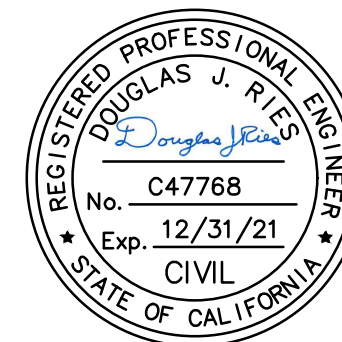
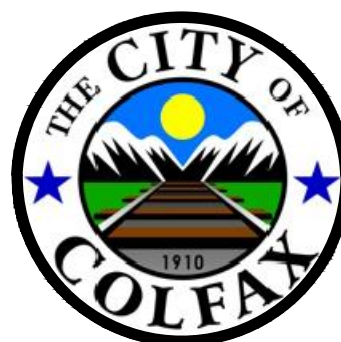
DETAIL AND SECTION CALLOUTS



No.	Issue	Drawn	Approved	Date

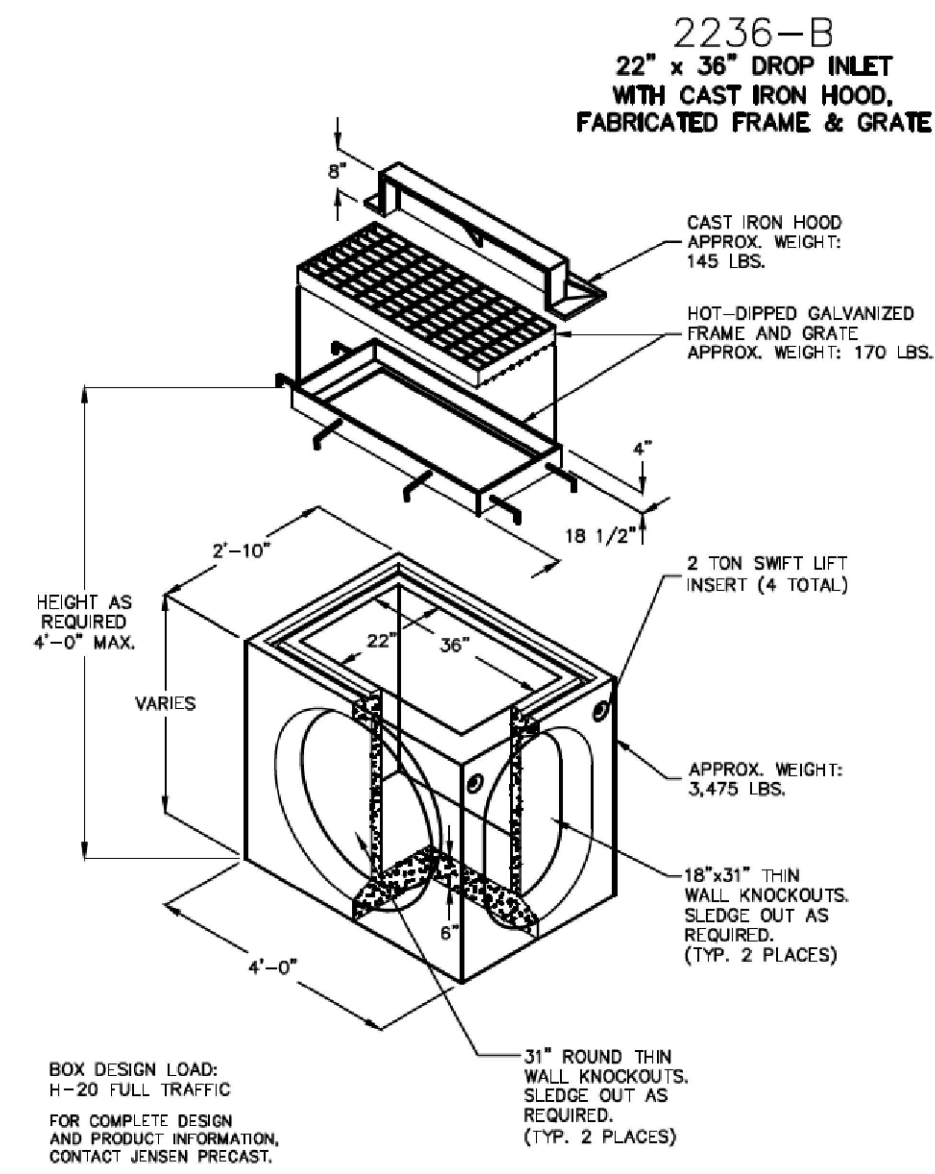
Bar is one inch on original size sheet
0 1"

Reuse of Documents
This document and the ideas and designs incorporated herein, as an instrument of professional service, is the property of GHD and shall not be reused in whole or in part for any other project without GHD's written authorization.
© 2020 GHD

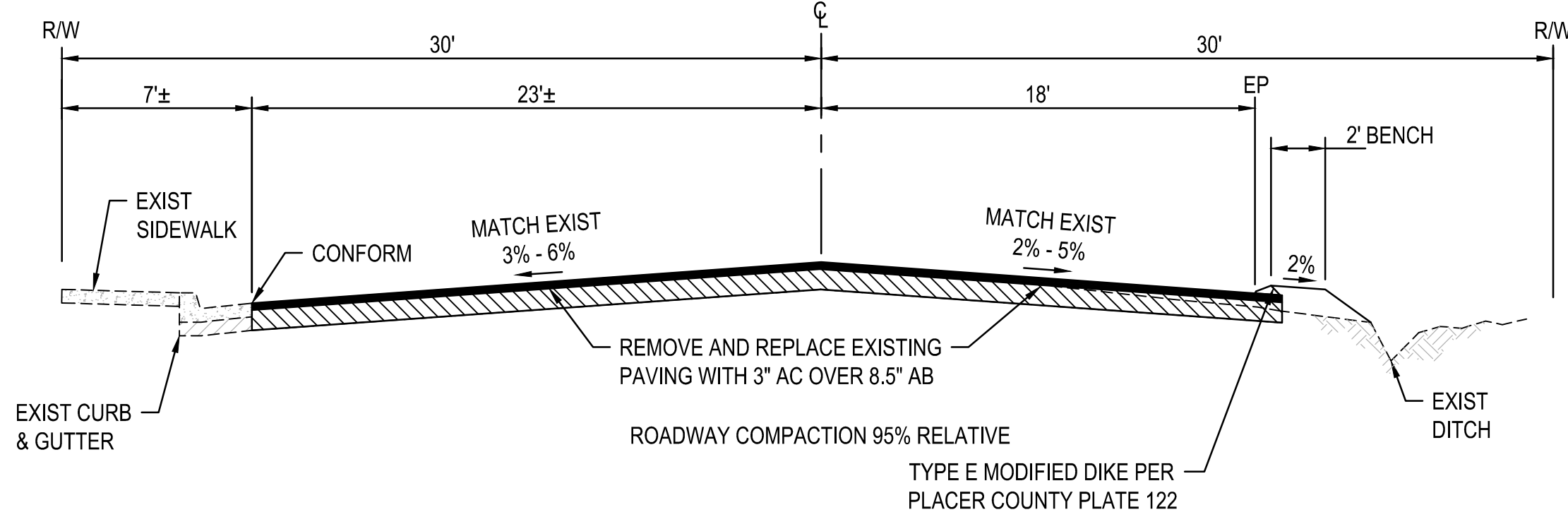


Drawn	EM	Designer	DTZ
Drafting Check	DJR	Design Check	DJR
Project Manager	DJR	Date	MAY 2020
This document shall not be used for construction unless signed and sealed for construction.		Scale	AS NOTED

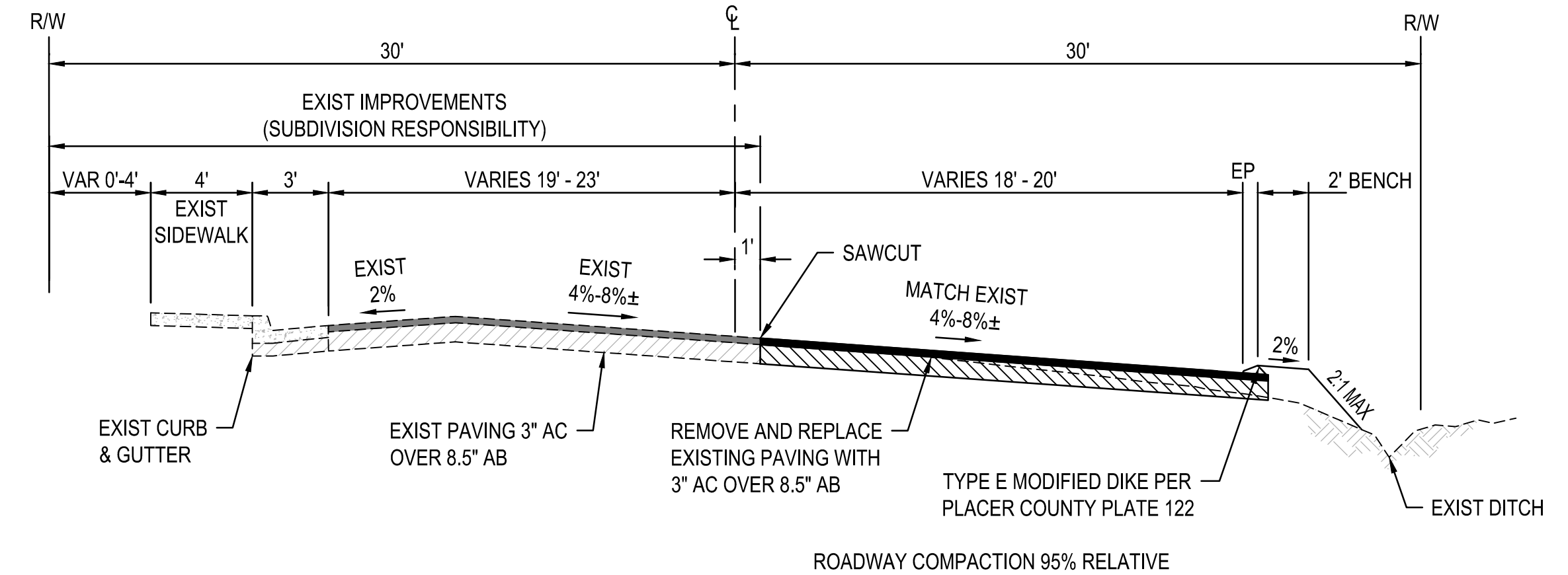
Client	CITY OF COLFAX		
Project	KNEELAND STREET - PAVEMENT REHABILITATION PROJECT		
Title	NOTES, LEGEND, AND ABBREVIATIONS		
Project No.	11201706		
Original Size	ANSI D	Sheet No.	G1



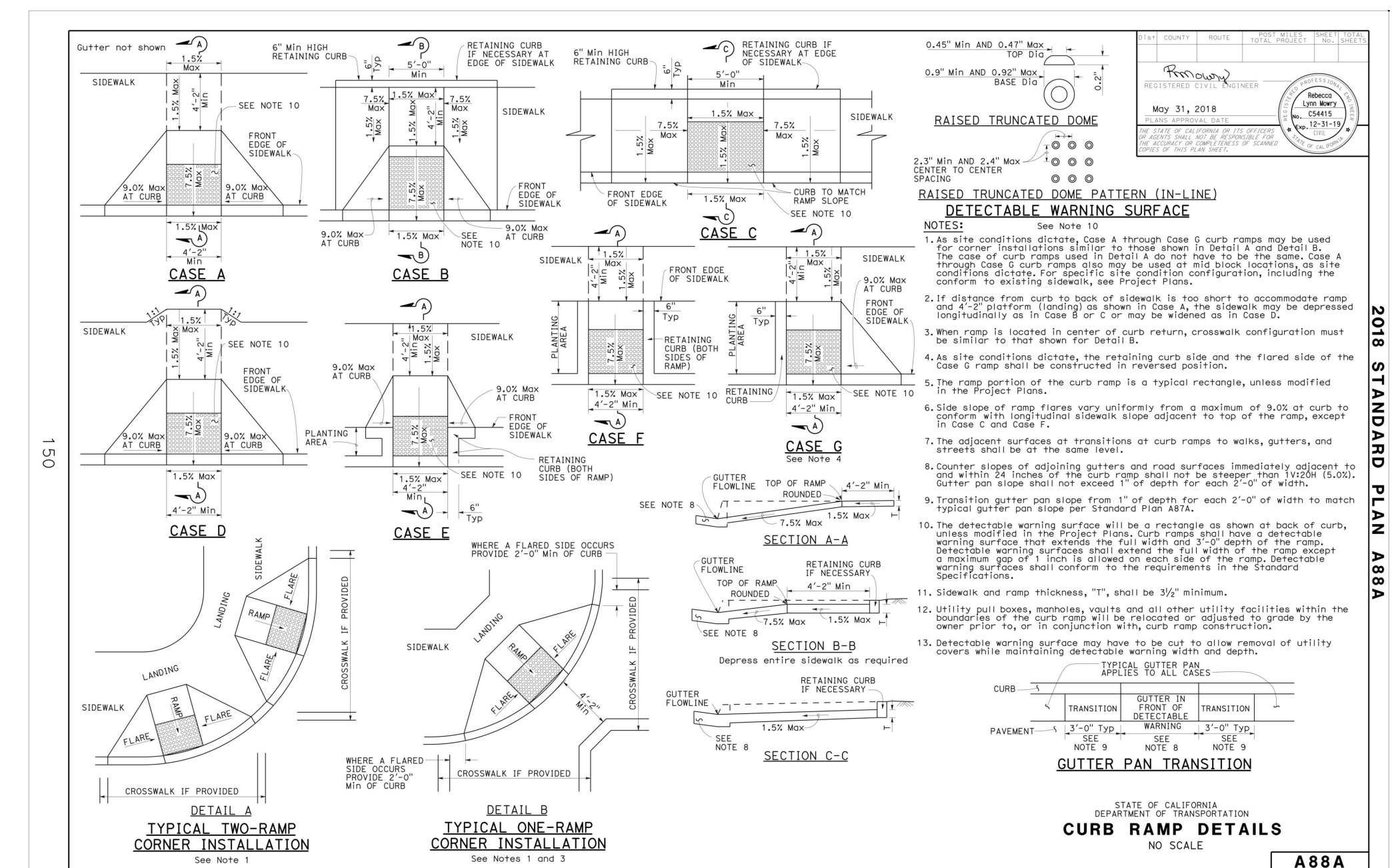
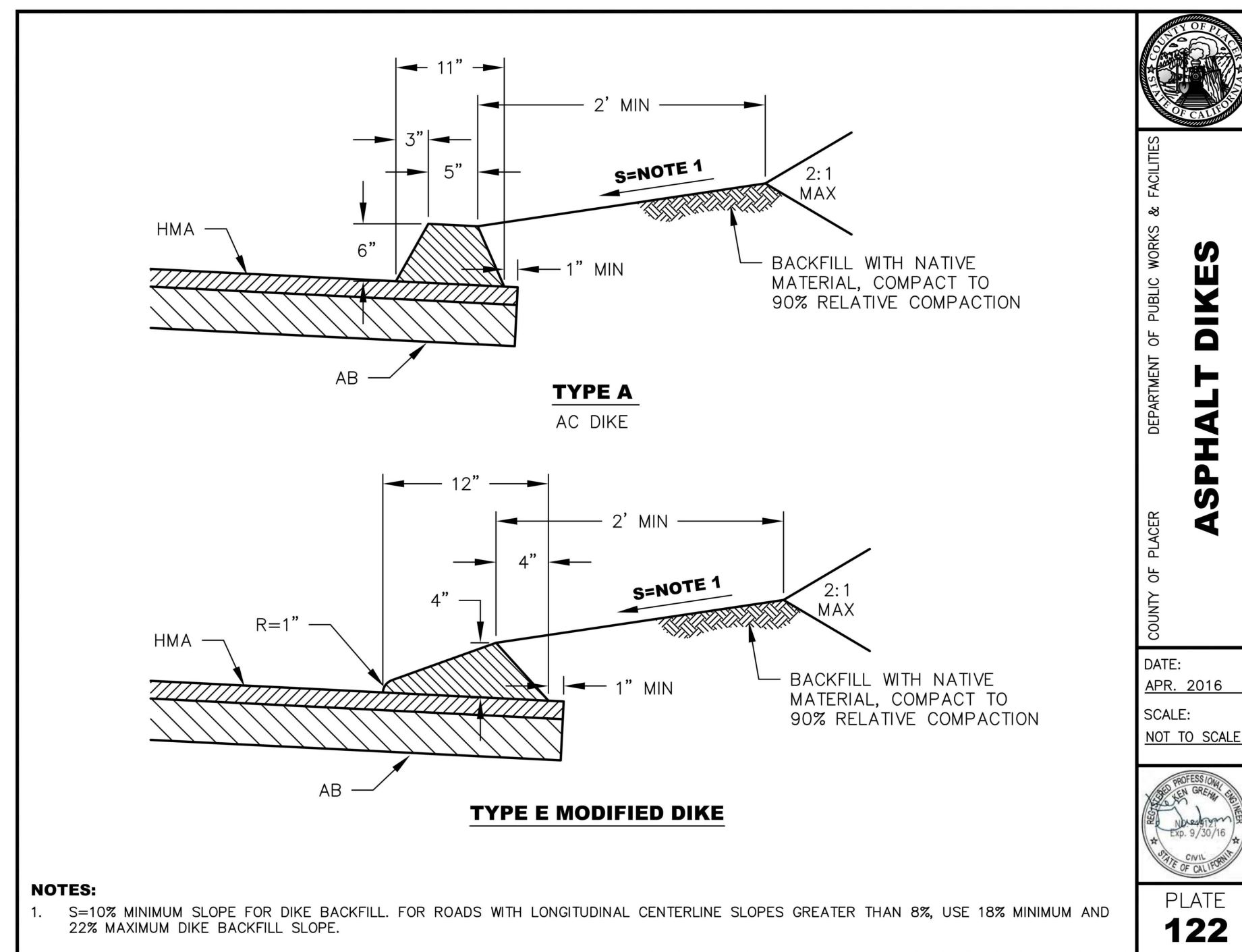
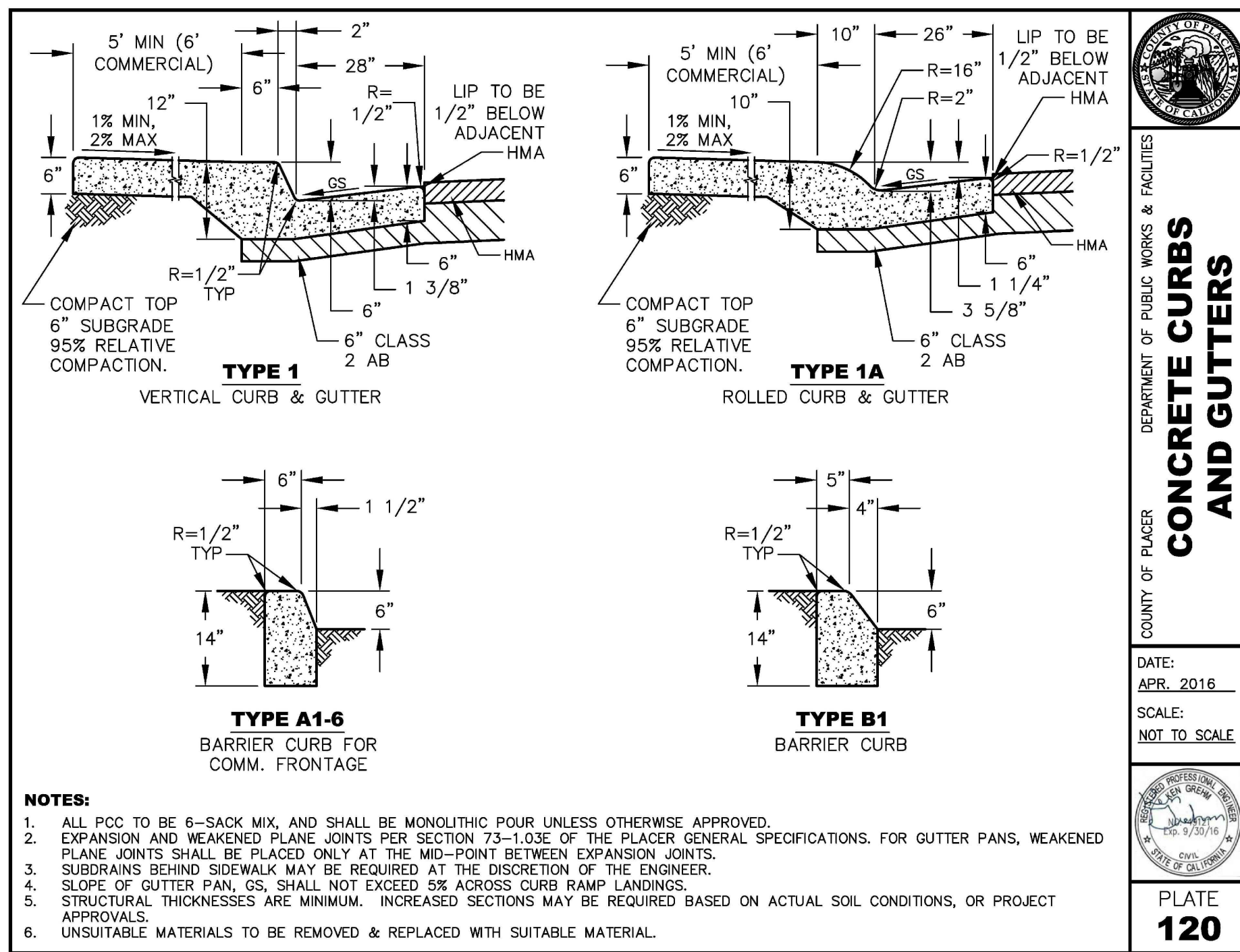
1
DRAINAGE INLET TYPE-B



1
KNEELAND STREET TYPICAL ROADWAY SECTION AT STA 11+00±
NOT TO SCALE



2
KNEELAND STREET TYPICAL ROADWAY SECTION AT STA 11+25± - 13+50±
NOT TO SCALE



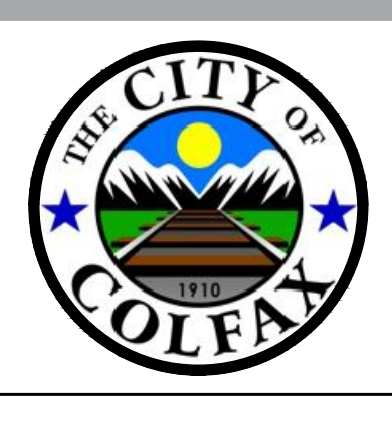
No.	Issue	Drawn	Approved	Date

Bar is one inch on original size sheet

0 1"

Reuse of Documents

This document and the ideas and designs incorporated herein, as an instrument of professional service, is the property of GHD and shall not be reused in whole or in part for any other project without GHD's written authorization. © 2020 GHD



GHD

GHD Inc.
943 Reserve Drive, Suite 100
Roseville California 95678 USA
T 916.782.8688 W www.ghd.com

REGISTERED PROFESSIONAL ENGINEER

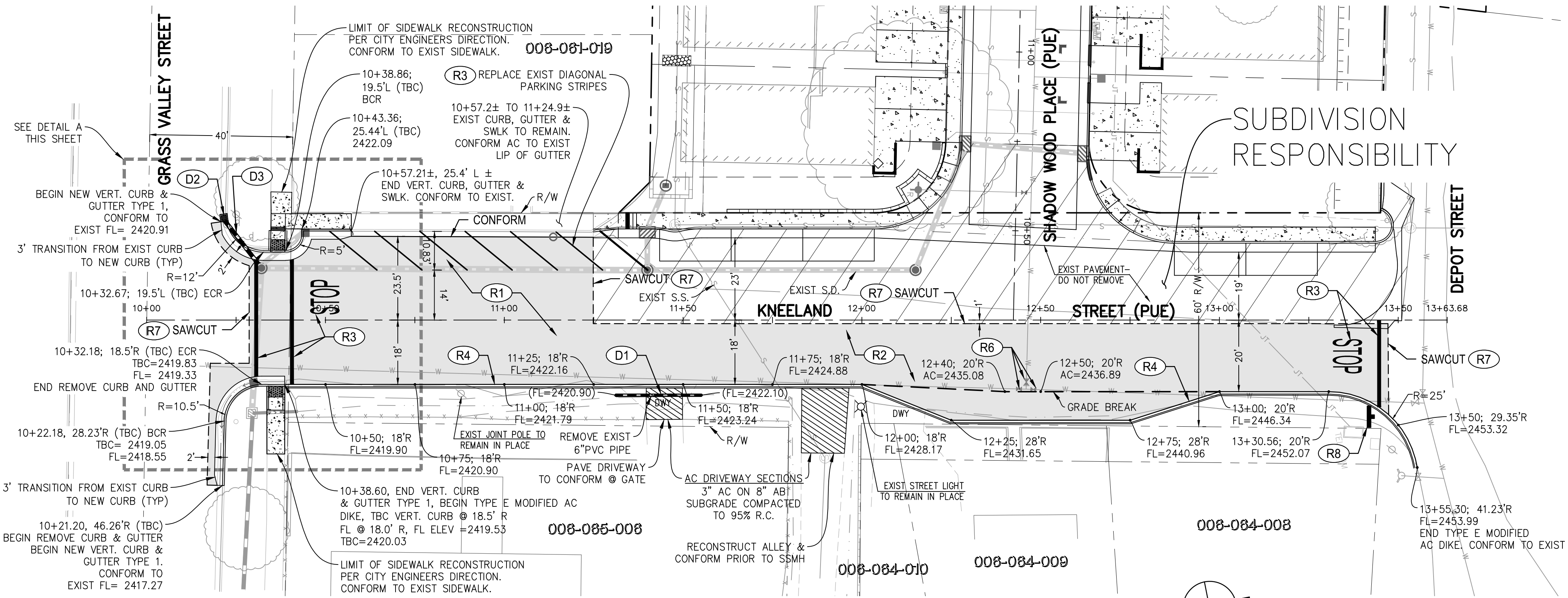
DOUGLAS J. R. REED

No. C47768
Exp. 12/31/21
CIVIL

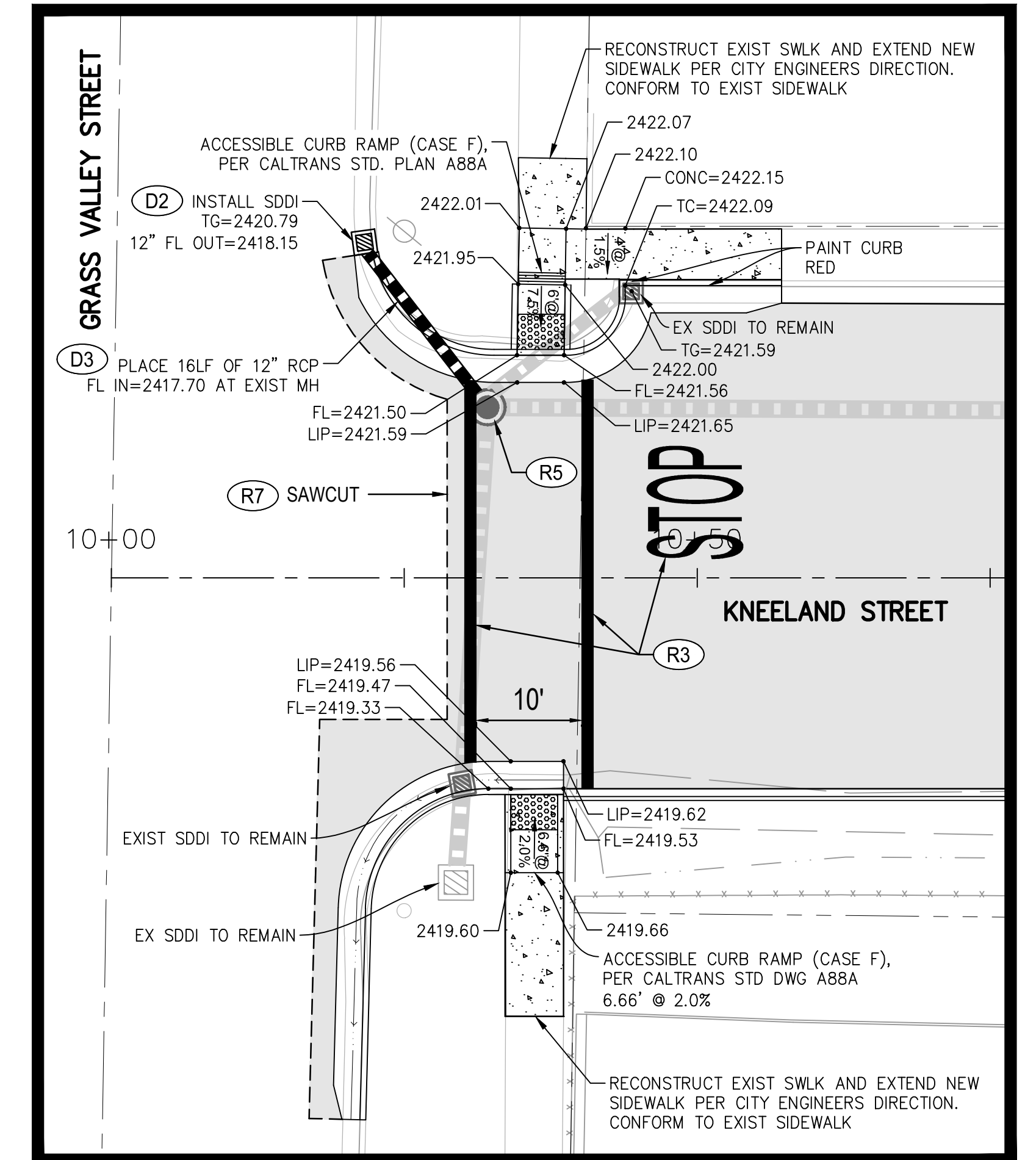
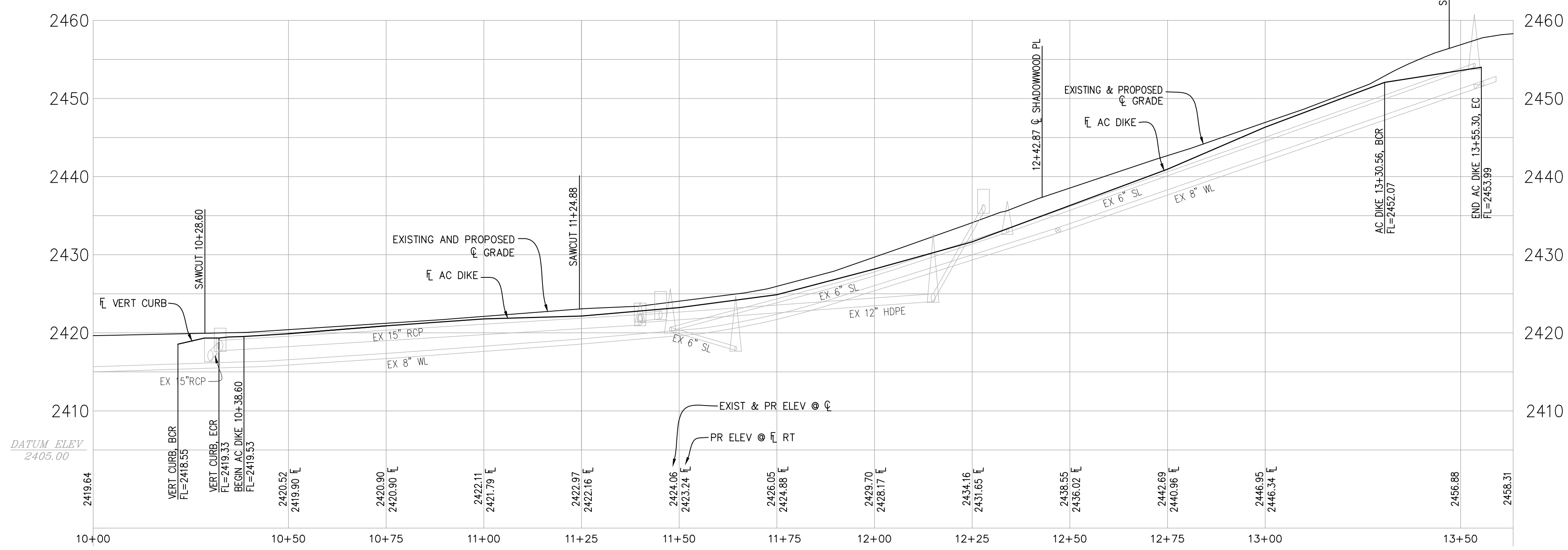
STATE OF CALIFORNIA

Drawn	EM	Designer	DTZ
Drafting Check	DJR	Design Check	DJR
Project Manager	DJR	Date	MAY 2020
This document shall not be used for construction unless signed and sealed for construction.		Scale	AS NOTED

Client	CITY OF COLFAX
Project	KNEELAND STREET - PAVEMENT REHABILITATION PROJECT
Title	SECTIONS AND DETAILS
Project No.	11201706
Original Size	ANSI D
Sheet No.	X1
Sheet	3 of 4



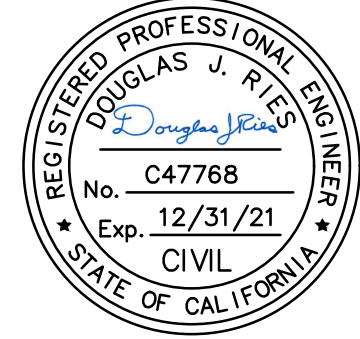
KNEELAND STREET PLAN VIEW
SCALE 1" = 20'



No.	Issue	Drawn	Approved	Date

Bar is one inch on original size sheet
0 1"

Reuse of Documents
This document and the ideas and designs incorporated herein, as an instrument of professional service, is the property of GHD and shall not be reused in whole or in part for any other project without GHD's written authorization.
© 2020 GHD



Drawn	EM	Designer	DTZ
Drafting Check	DJR	Design Check	DJR
Project Manager	DJR	Date	MAY 2020
This document shall not be used for construction unless signed and sealed for construction.		Scale	AS NOTED

Client	CITY OF COLFAX	
Project	KNEELAND STREET - PAVEMENT REHABILITATION PROJECT	
Title	PLAN AND PROFILE	
Project No.	11201706	
Original Size	ANSI D	Sheet No. P1
Scale	AS NOTED	Sheet 4 of 4