



Reducing Public Safety Power Shutoff Impacts in Colfax

To keep our communities and customers safe, PG&E may need to turn off power during severe weather conditions. This is called a Public Safety Power Shutoff (PSPS). We are working year-round and nonstop to **make our system safer and more resilient, and improve PSPS events for our customers and communities.** We continue to test and use new tools and technologies to pinpoint how to best prevent and respond to the risk of wildfires. This includes **installing and operating distribution microgrids to safely mitigate the impacts of a potential PSPS event on our customers and communities.**

What is a distribution microgrid?

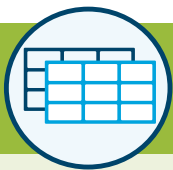
To support our customers during a PSPS event, **we install and prepare distribution microgrids in the areas most likely to experience PSPS events.** If safe to energize during a PSPS event, distribution microgrids are designed to power communities' central corridors (i.e., "Main Street") to help:



Safely provide electricity to critical facilities and shared community resources



Reduce the number of customers impacted by PSPS



When will the Colfax microgrid be used?

When safe to operate, distribution microgrids are used during a PSPS event to support our customers.

However, in some cases we may not be able to use a microgrid due to:



Hazardous conditions that could pose a fire risk if lines were energized.



A large PSPS event or multiple simultaneous emergencies that require prioritizing critical locations first.



Equipment damage or mechanical failure.

What can you expect in your community?



AT THE START OF WILDFIRE SEASON

- Staged temporary generators, used to energize the microgrid, near the South Main Street/Grass Valley Street intersection.

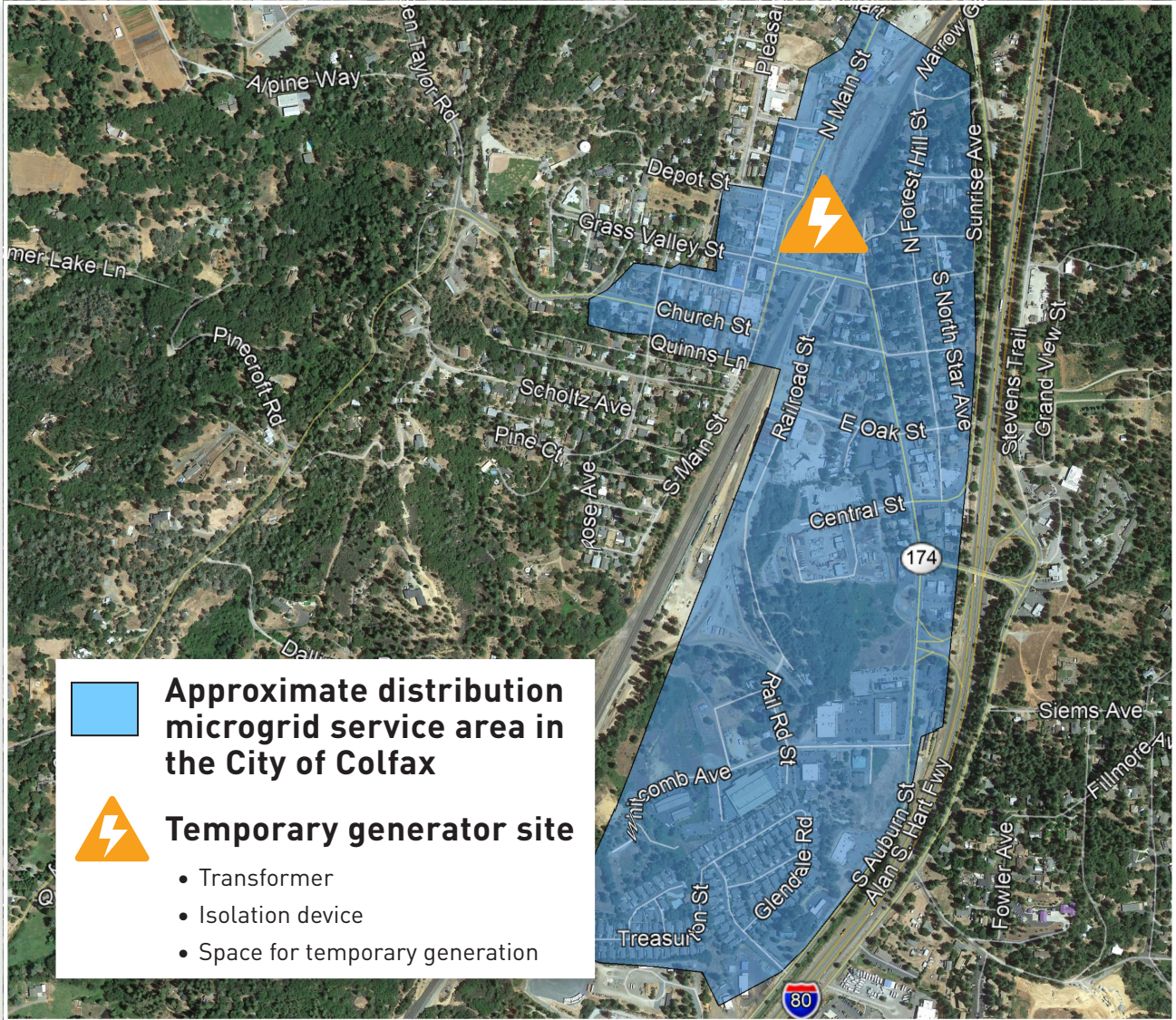
DURING A PSPS EVENT

- PG&E crews and vendors **working on-site** at the Colfax microgrid with temporary generators.
- Standard ongoing **outage notifications and alerts related to the PSPS event**, including specific updates related to the microgrid.
- A **brief second temporary outage while the microgrid is being reconnected** to the larger electric grid, when safe to re-energize at the end of a PSPS event.

What the Distribution Microgrid Looks Like in Your Community



This map represents the approximate area of Placer County served by PG&E's distribution microgrid in Colfax. **The temporary generator site will be located near the South Main Street/Grass Valley Street intersection.** Though the distribution microgrid energizes the area shown below, nearby facilities or businesses, may remain energized through private temporary generators.



Learn More

For more information about the Colfax Distribution Microgrid, please email us at wildfiresafety@pge.com. You can also learn more about all our wildfire safety efforts by visiting pge.com/wildfiresafety.

- For translated support
- in over 200 additional
- languages, please contact
- PG&E at **1-866-743-6589**.